

FEDERAL SUPPLY CLASS
4730

RATIONALE

GRAPHICS REDRAWN. FLAGNOTE /15/ ADDED TO ØE IN FIGURE 1. 45° DIMENSION BEHIND THREAD HAS BEEN REMOVED BECAUSE IT IS ALREADY BEING DEFINED ON AS4375, STYLE E. FLAG NOTE /24/ ADDED. GENERAL UPDATES INCORPORATED.

REV. D
AS4137™

SAE Technical Standards Board Rules provide that: "This report is published by SAE to advance the state of technical and engineering sciences. The use of this report is entirely voluntary, and its applicability and suitability for any particular use, including any patent infringement arising therefrom, is the sole responsibility of the user." SAE reviews each technical report at least every five years at which time it may be revised, reaffirmed, stabilized, or cancelled. SAE invites your written comments and suggestions.

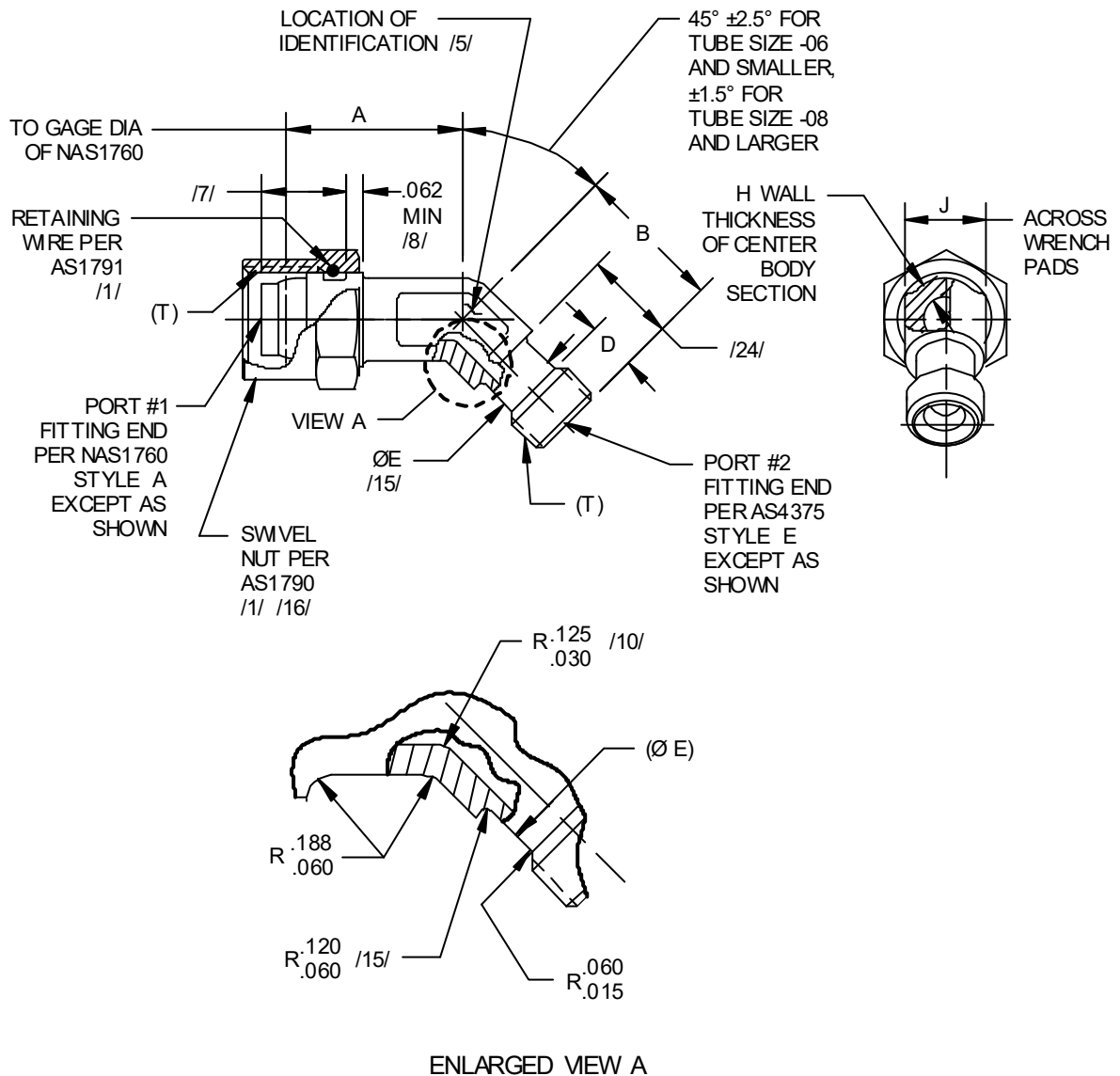
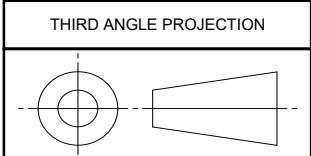


FIGURE 1 - FITTING ASSY, ELBOW, REDUCER, 45°, SWIVEL, REDUCED BODY, FLARELESS

SAE values your input. To provide feedback on this Technical Report, please visit <http://standards.sae.org/AS4137D>



CUSTODIAN: G-3/G-3B

PROCUREMENT SPECIFICATION: AS18280 /4/



AEROSPACE STANDARD
FITTING ASSY, ELBOW, REDUCER,
45°, SWIVEL, REDUCED BODY,
FLARELESS

AS4137™
SHEET 1 OF 5

REV. D

ISSUED 1992-11 REAFFIRMED 2000-10 REVISED 2019-07

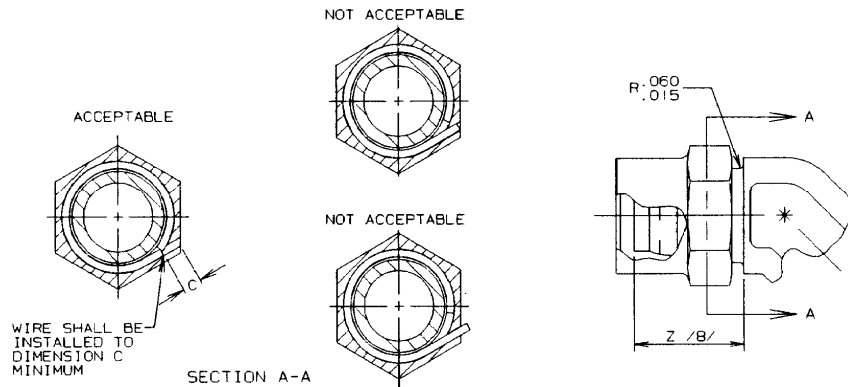


FIGURE 2 - INSTALLATION, SWIVEL NUT RETAINING WIRE

TABLE 1 - DIMENSIONS AND WEIGHTS

BASIC NO. AS4137 /21/ SIZE CODE	H MIN	J	LB/EA APPROX REF CRES	LB/EA APPROX REF TI
04	.050	.390	.050	.028
05	.050	.453	.064	.036
06	.050	.453	.076	.043
08	.050	.577	.134	.075
10	.070	.702	.208	.117
12	.080	.890	.326	.183
16	.090	1.140	.492	.276
20	.110	1.390	.794	.446
24	.130	1.640	1.148	.645

TABLE 2 - FITTING END

SIZE CODE	TUBE OD	T THREAD PER AS8879	C /16/	D	E	Z
04	.250	.4375-20UNJF	.075	.371	.350	.600
05	.313	.5000-20UNJF	.076	.371	.412	.660
06	.375	.5625-18UNJF	.084	.379	.453	.730
08	.500	.7500-16UNJF	.095	.461	.577	.845
10	.625	.8750-14UNJF	.115	.511	.702	.940
12	.750	1.0625-12UNJ	.149	.556	.890	.975
16	1.000	1.3125-12UNJ	.178	.556	1.140	1.160
20	1.250	1.6250-12UNJ	.221	.556	1.390	1.190
24	1.500	1.8750-12UNJ	.291	.556	1.640	---